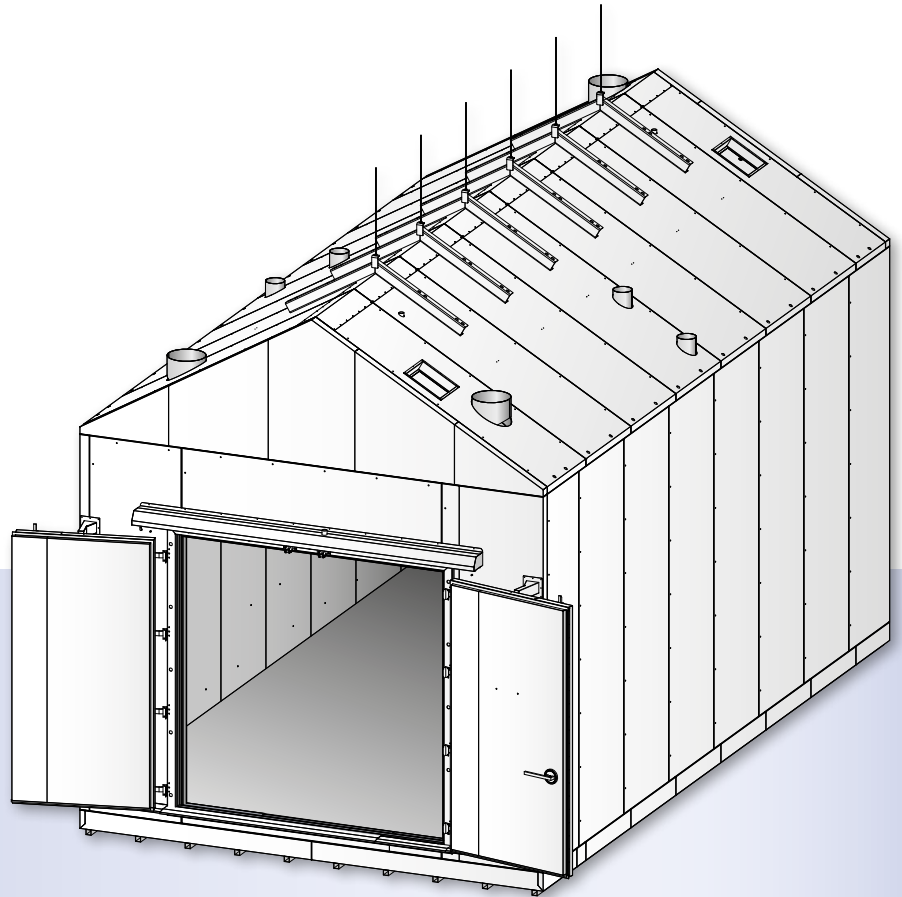


Salt-spray chambers



Salt-spray chambers

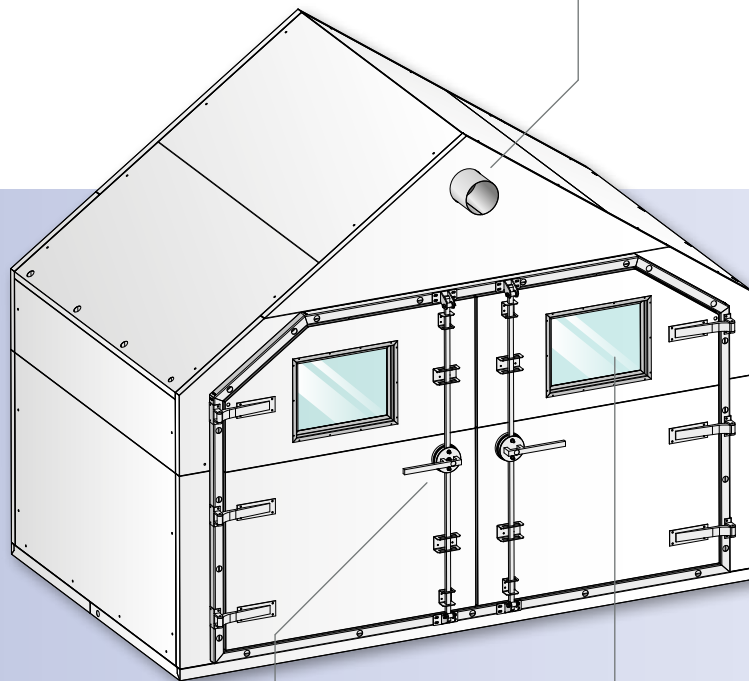
Corrosion-resistant test chambers to simulate environmental influences such as rain, mist or splashwater.

- Design made completely of 160 mm sandwich elements filled with hard polyurethane foam
- Thermal bridge-free tongue and groove connections
- Highly corrosion-resistant steels on all inside surfaces: V4A (1.4404) or V5A (1.4539)
- All joints in the inside space are welded
- Can be manufactured in any size and form
- Temperature range: -40° to $+60^{\circ}\text{C}$
- Humidity of up to 98%

Openings of various sizes can be used for measuring and installation technology; these can be tightly welded on the inside.



View from the outside



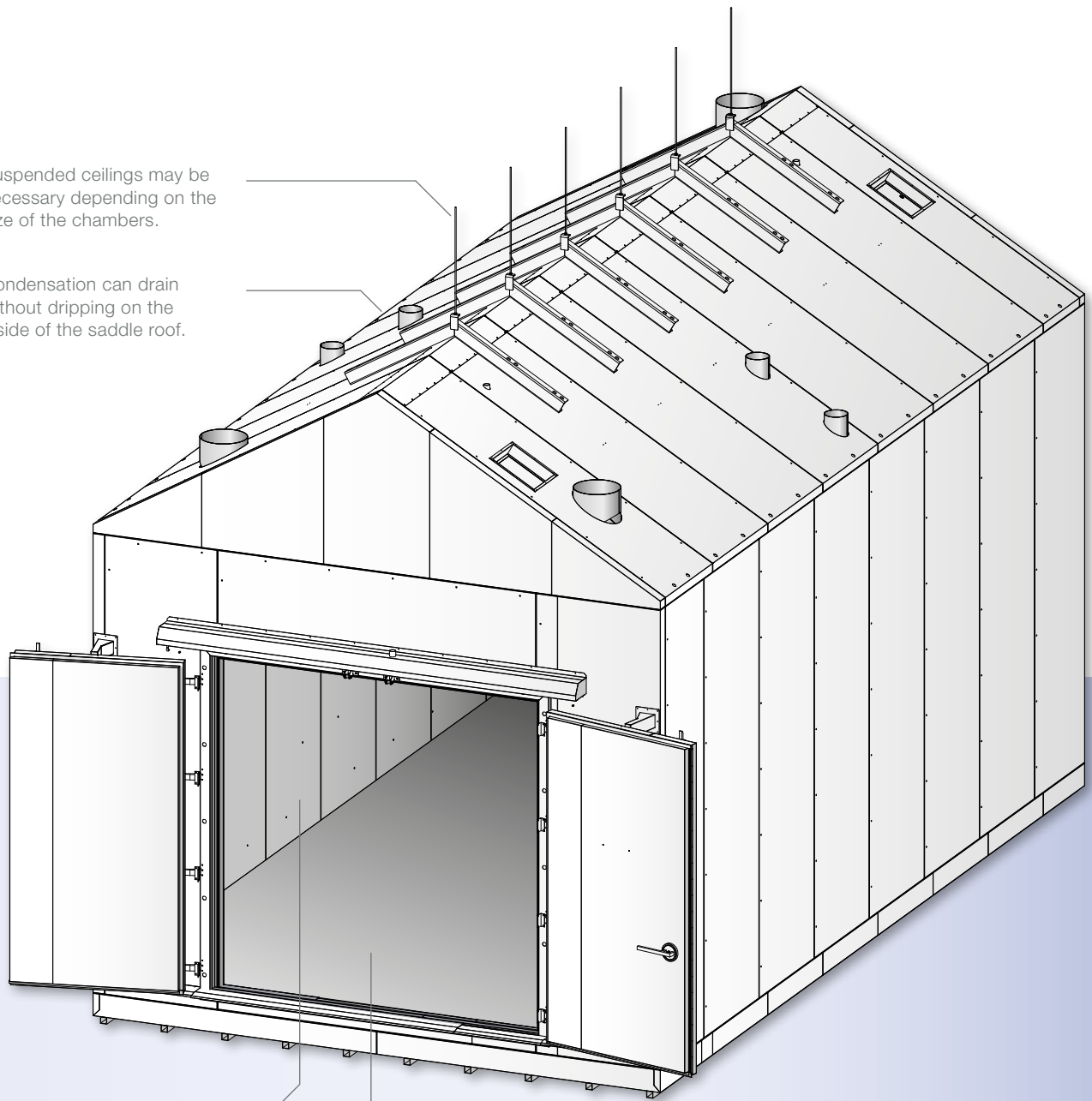
Tight-closing, corrosion-resistant doors, with outside shoot bolts, that can be opened from inside. Lockable on request.



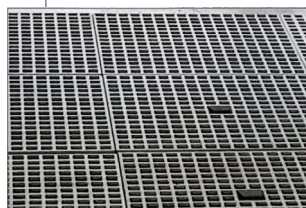
Airtight, heated windows for visual inspections during on-going operations.

Suspended ceilings may be necessary depending on the size of the chambers.

Condensation can drain without dripping on the inside of the saddle roof.



Inside chamber is made of highly corrosion-resistant steels. Joints are welded without edging.

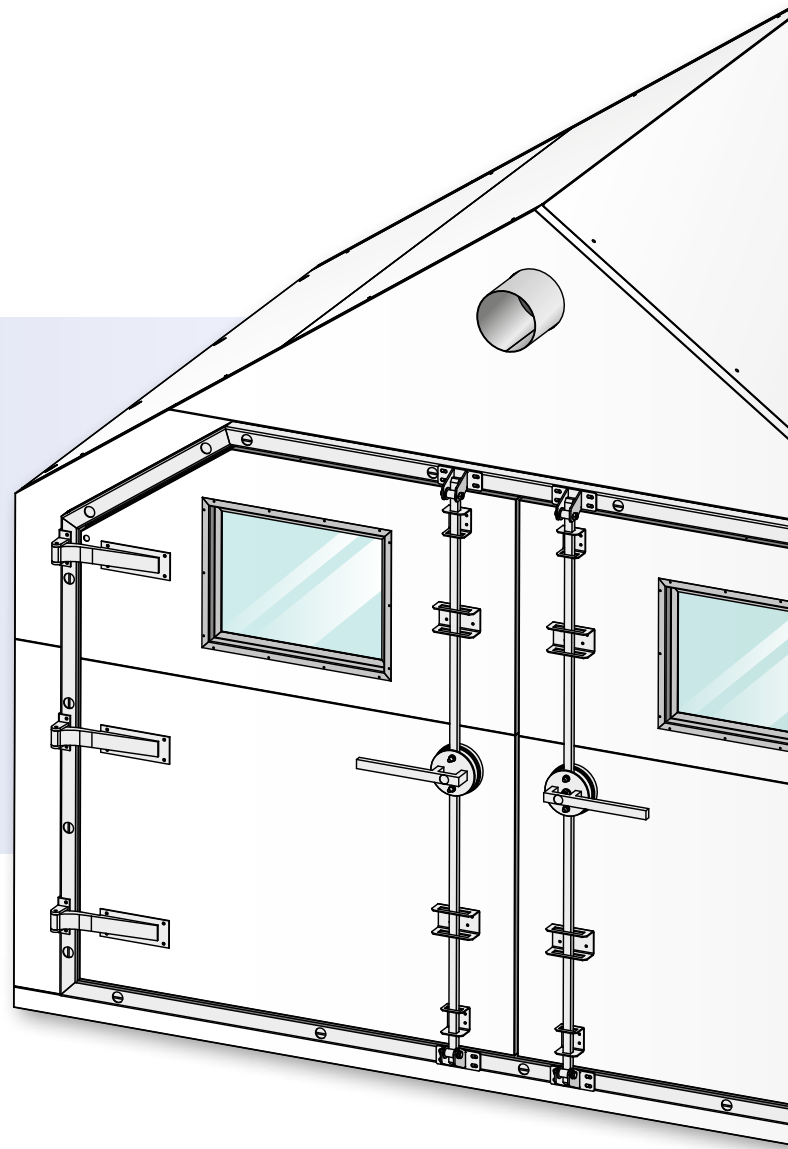


Passable floor made of GRP grates with recesses for underfloor spray nozzles.



Passable, non-slip stainless steel floor with flush-mounted welded drains. If necessary, floors may also be inclined.

- Chiller and freezer cells
- Chiller and freezer chamber doors
- Climate and test cells
- Clean room technology
- Machine claddings



salt-spray chambers 7/2019